



# TUFFPADS®

## TRACK PADS

---

# NEWS



1080 Nerge Road, Suite 204  
Elk Grove Village, Illinois 60007  
Toll Free: (888) TUFFPADS

## "#1 Source for Track Pads"

WINTER/SPRING 2000

Office: (847) 301-0299  
Fax: (847) 301-0651  
E-Mail: [bls@tufpads.com](mailto:bls@tufpads.com)  
Web Site: [www.tufpads.com](http://www.tufpads.com)

### BLS HOSTS SEMINARS AT CONEXPO-CON/AGG '99



Barry Stoughton

At CONEXPO-CON/AGG '99 in Las Vegas, Nevada, in March 1999, Barry Stoughton, President and founder of **BLS Enterprises, Inc.**, hosted two seminars entitled "Unique Applications of Polyurethane Track Pads" at the Construction Industry Manufacturers Association Theater.

The exhibition is the largest trade show in the Western Hemisphere for the construction, aggregates, and ready-mixed concrete industries, in 1999 covering over 1.7 million square feet of exhibit space, with over 1880 exhibitors and more than 124,000 attendees. Since **BLS Enterprises, Inc.** is the pioneer and developer of polyurethane **TUFFPADS®** track pads, Mr. Stoughton was pleased to inform contractors on the development and uses of polyurethane covered track pads in the construction industry.

**BLS Enterprises, Inc.** was the first to bring polyurethane track pads to the North American market for use on asphalt milling machines, asphalt pavers, and other steel track vehicles. The polyurethane **TUFFPADS®** track pads provide better traction than steel tracks on hard surfaces, increasing the efficiency of the asphalt milling machines. **TUFFPADS®** track pads also protect the working surface (asphalt or concrete roads, parking lots, curbs, indoor floors etc.) against damage by steel tracks.

### BLS EXHIBITS IN SINGAPORE

In October 1999, **BLS Enterprises, Inc.** exhibited in the Construction Industry Manufacturers Association (CIMA) U.S. Pavilion at BAUCON ASIA '99 in Singapore. BAUCON is the premier trade fair for the building and construction industry in Southeast Asia. With a total of 330 exhibitors from twenty-four countries and regions, the four-day exhibition attracted nearly 10,000 visitors and professionals from fifty-two countries. Attending the BAUCON fair gave Mr. Stoughton, President of **BLS Enterprises**, the chance to meet with current and prospective customers from the Southeast Asia area.

### TUFFPADS® INCREASE TRENCHER'S PROFITS

**BLS'** polyurethane **TUFFPADS®** track pads are not only used for protecting asphalt or concrete surfaces that machines walk over. They also provide greater traction than bare metal grouser shoes on asphalt milling machines, trenchers, paving machines, and other tracked construction machines. The increased traction results in the ability to mill more asphalt, pave more roads, and dig longer trenches in a workday. Increased production from the machine results in increased profits.

Jack Mills, President of Plum Contracting, Pittsburgh, PA, a long time **BLS** satisfied customer, purchased polyurethane **TUFFPADS®** track pads for the Trenchor models 665, 860, and 1260 trenching machines. The model 1260 weighs 150,000 pounds, and Mr. Mills is pleased that **TUFFPADS®** track pads lasted for 3 years or about 1,600 hours. He stated the **TUFFPADS®** track pads have increased the traction and efficiency on their trenching machines, and this has resulted in increased production per day and increased profits. Also, Mr. Mills has been very satisfied with the personal service he has received from **BLS**, saying in a recent conversation, "**BLS** has gone out of their way to please me."



Trenchor 1260 Trencher with **TUFFPADS®** Track Pads

### BLS NOW HAS BRIDGESTONE CONTINUOUS RUBBER TRACKS

**BLS Enterprises, Inc.** is proud to announce the availability of a complete line of **BRIDGESTONE** continuous rubber tracks for mini-excavators, compact dozers, and other construction vehicles; see a partial listing of available machines and models inside this newsletter. After seeing more and more of the mini-excavators with continuous rubber tracks on construction sites and at trade shows, and in response to demand from customers, **BLS** has committed to become the #1 after-market supplier of continuous rubber tracks. One of **BLS'** biggest benefits with continuous rubber tracks, as with many of its products, is the ability to ship many of the popular sizes usually within 24 hours and sometimes the same day.

**BRIDGESTONE** is the largest manufacturer of continuous rubber tracks in the world, has the largest availability of sizes, and uses advanced technology to produce what **BLS** believes to be the best continuous rubber tracks available. Many new machines come with **BRIDGESTONE** continuous rubber tracks installed at the factory, and **BLS'** customers can now get the same high quality replacement continuous rubber tracks from **BLS** as the OEM installed parts.



Dozer with **BRIDGESTONE** Continuous Rubber Tracks

#### On the inside . . .

|   |        |
|---|--------|
| Paving Applications . . . . .                               | Page 2 |
| Availability of Tufpads . . . . .                           | Page 3 |
| Continuous Rubber Tracks and Clip-On Availability . . . . . | Page 4 |
| Trade Show Preview . . . . .                                | Page 5 |
| Scrap Yard Application . . . . .                            | Page 6 |
| NASCAR, Website, Rentals . . . . .                          | Page 7 |
| Milling Applications . . . . .                              | Page 8 |

# Polyurethane TUFPADS® Track Pads

## The #1 Street Pad for Paving Machines

### ONE EQUALS TWO IN PAVING



One-piece TUFPADS®

#### ASPHALT PAVING CONTRACTORS ARE CONVERTING THEIR TWO-PIECE TRACK PAD SYSTEMS TO ONE-PIECE TUFPADS® TRACK PADS

Many asphalt pavers, including Ingersoll-Rand/Allatt 650 & 750 series, Barber-Greene 245 & 265 series, Caterpillar AP 1050, and others come with a two-part track pad system. This system consists of a steel back plate bolted with four bolts to the drive chain, and a track pad that is then bolted with two studs to the back plate.

**BLS** produces its one-piece polyurethane TUFPADS® track pads and rubber HQRPADS track pads for these asphalt pavers. The one-piece track pads consist of polyurethane or rubber permanently bonded to a steel triple grouser core that is bolted with four bolts directly to the drive chain. Many asphalt paving machine manufacturers, including

Caterpillar, Roadtec, Cedarapids, CMI, and others, now use the one-piece track pad system on their pavers and milling machines.

Contractors report that the one-piece track pad is much less likely to come loose or come apart (debond) than the two-piece system, is easier to install, displays exceptional wearability, and offers good traction. Also, if your steel back plates are bent, the initial cost of the complete one-piece system is much less than the cost of replacing both the back plate and the bolt-on pad.

Mr. Beverly Tubbs, Parts Manager for Lehman-Roberts Company, Inc., Memphis, Tennessee replaced the two-part OEM system with the one-piece TUFPADS® track pads for his 1989 and 1991 Caterpillar AP 1050 asphalt track paver during December 1996 and March 1997. Mr. Tubbs reported in December 1999 the TUFPADS® track pads on both pavers have had three years or over 3,000 hours of heavy usage, and he said, "That's pretty darn good." Mr. Tubbs said he will replace the tracks on both machines with TUFPADS® track pads this winter. For one paver he plans to have **BLS** install the TUFPADS® track pads on new rails.

Prior to the 1999 season Lehman-Roberts Company purchased TUFPADS® track pads for their 1993 Blaw-Knox PF 510 asphalt paver. The paver was equipped with a special hopper, which added more weight to the load on the tracks. Mr. Tubbs told **BLS**, "We used the Blaw-Knox with TUFPADS® track pads as our first line paver during the 1999 season, so it really got heavy usage. When we brought in the paver recently for winter repair, I was happy to see the pads were wearing very evenly and in fact looked like new. When we can purchase the TUFPADS® at much less than OEM pads and still have them wear so well, we are extremely pleased with TUFPADS® track pads."

### COMPLETE REBUILT BLAW-KNOX PF-400 AND PF-500 TRACK ASSEMBLIES



Blaw-Knox PF-500 Track Assembly

**BLS Enterprises, Inc.** will rebuild your complete track assemblies, using **BLS'** new polyurethane TUFPADS® track pads and bands, for the **Blaw-Knox PF-400 and PF-500** series pavers. **BLS** usually has available completed rebuilt track assemblies, which can be shipped out immediately. After receiving a completed set, the customer can return his used set for core credit.

A complete **BLS** rebuild consists of reconditioning the sprocket holes on the steel cross shoes back to original dimensions, cleaning the guides, and installing new polyurethane TUFPADS® track pads and track bands with new self-locking nuts.

**BLS will purchase your used Blaw-Knox track assemblies.**

If your company has a used complete Blaw-Knox track assembly, contact **BLS** about purchasing it. **BLS** needs a supply of used sets to have completed rebuilt assemblies available for quick shipment.

### NEW FOR THE YEAR 2000: RUBBER ARTLINER-BLS TRACK PADS



**BLS** now has available a complete line of rubber Artliner-BLS clip-on and bolt-on track pads. Artliner-BLS pads are available for more than 1,000 different machines. These pads are mostly designed for machines made by Asian manufacturers. Many of these machines are coming into the North American market. **BLS** will also have the clip-on track pads available to fit on the D4 and D5 Caterpillar style triple grouser shoes in 18", 20", and 24" (450 mm, 500 mm, and 600 mm) widths.

#### Clip-On Track Pads

**Artliner-BLS** clip-on pads are easy to install and to remove, allowing a machine to be used for two different types of jobs. With rubber track shoes on, the machine can be used on surfaces that need protecting, such as asphalt, concrete, and grass. The rubber track shoes can be easily removed to use the machine on hard surfaces where protection is not needed. The clip-on pads are attached to the steel grousers either by a bolt-on bracket at each end or by a slipover yoke at one end and a bolt-on bracket at the other end. The bolt-on brackets are easily attached and unattached by one person with an air wrench.

#### Bolt-On Track Pads

**Artliner-BLS** bolt-on pads are attached to the steel grousers by having the stud bolts, which come out of the bottom of the pads, bolted through holes in the grouser plate. Many of the Asian style construction machines have these holes predrilled by the manufacturer, or you can have the holes drilled or burned in your steel shoes.



1080 Nerge Road, Suite 204  
Elk Grove Village, Illinois 60007



Toll-free, U.S. & Canada  
**1-800-307-0299**  
Local: **1-847-301-0299**  
Fax: **1-847-301-0651**  
E-Mail: [bis@tufpads.com](mailto:bis@tufpads.com)  
Web Site: [www.tufpads.com](http://www.tufpads.com)

**Barry Stoughton**  
Polyurethane & Rubber Track Pads  
**BRIDGESTONE** Continuous Rubber Tracks  
**ARTLINER-BLS** Rubber Pads  
Eindra-Mat Fiberglass Stabilizer Mats  
Steel Asphalt Paver Wear Parts



**BLS PRODUCT PHOTOS**



**Artliner-BLS** Clip-On Rubber Pads on a Caterpillar 320L



**TUFPADS** Stabilizer Pads on a Ferrec Backhoe. Also available for John Deere, Case, Kobelco & others



**TUFPADS** Track Pads on a Wirtgen 1900 Milling Machine



Steel Wear Parts for Asphalt Pavers

**TUFPADS SOFTEN GIANT'S TRACKS**

Recently a steel recycling yard contacted **BLS** with their special problem. New government regulations require them to separate their scrap steel on a concrete surface area to decrease run-off of harmful liquids. They wanted to use their existing tracked cranes because of the larger load capacities of the tracked units and the high cost of rubber tire replacement machines. Replacing the expensive tires was also a factor in their decision.

To prevent the steel tracks from chipping and cracking the concrete surface, the customer tried rubber pads bolted to steel grousers. The rubber pads very quickly disintegrated by chunking and stripping off, due to the heavy crane often running over sharp edged pieces of scrap steel.

**BLS** produced a set of 32" (800 mm) wide polyurethane **TUFPADS** track pads for their Komatsu PC 400 crane. They now have used the machine for a period of time and are very satisfied with the **TUFPADS**. After thorough investigation of this application the manufacturer of the crane, Komatsu America, has now purchased a set to demonstrate the PC-400 crane to their customers for this application.

**BLS** can produce 8" through 36" (200 mm through 900 mm) wide **TUFPADS** track pads for the large machines made by Caterpillar, Kobelco, Komatsu, Link-Belt, Case, Gradall, Hitachi, Hyundai, John Deere, and others.

PLEASE  
PLACE  
STAMP  
HERE



1080 Nerge Road, Suite 204  
Elk Grove Village, Illinois 60007-3224



Komatsu PC 400 with 32" wide **TUFPADS** Track Pads, used in steel recycling yard

## BLS CO-SPONSORS NASCAR TRUCK FOR 2000 RACE SEASON

**BLS Enterprises** is pleased to be in partnership with Caterpillar Inc. for the Addington Racing Team #60 Chevrolet truck for the 2000 race season. Andy Houston will be the team driver during the 2000 NASCAR Craftsman Truck racing season. The CAT Rental Store Truck with driver Andy Houston finished eighth in the point standings for the 1999 race season, and the team looks forward to a top 5 finish for the 2000 race season. Caterpillar Paving Products, Inc. uses polyurethane **TUFPADS**® track pads for its track driven asphalt paving and asphalt milling machines.

### BLS Treats a Customer to a Day at the Races. You Could be Next.

Ray Webb, of Faris Machinery, Commerce City, Colorado, was the winner of the tickets and hospitality package for the 1999 NASCAR Craftsman Truck Series Race. Ray and his three guests attended the NASCAR Craftsman

Truck race at Pikes Peak International Raceway in May of 1999. Ray stated, "We really enjoyed the time we spent in the garage area. It was very informative. The grandstand seats were great and the racing was superb. It's really great to be associated with a company that supports a quality-racing product."

**BLS Enterprises** again will be offering the drawing for the tickets and hospitality package. Each time you contact **BLS** for a purchase or product quote for **TUFPADS**® track pads or one of our other products, your name will be entered into the drawing for the tickets and hospitality package to a 2000 NASCAR Craftsman Truck series race event in your area. **BLS** will have three drawings for a set of tickets during the year 2000 race season. The drawings will be April 1st, June 1st, and August 1st.



CAT Rental Store Truck

## BLS SUPPLIES THE RENTAL INDUSTRY

**BLS** polyurethane **TUFPADS**® track pads, rubber **HQRPADS** track pads, and the new rubber **Artliner-BLS** clip-on or bolt-on track pads allow the rental industry to get double rental usage from their excavators, dozers, trenchers, and other steel track construction machinery. The **Artliner-BLS** clip-on pad is designed for fast and easy on and off installation to existing triple grouser steel tracks. (See **Artliner-BLS** article elsewhere in this newsletter.) All three types of **BLS** track pads allow the steel track machines to work on asphalt, concrete, grass, etc. without damaging the working surfaces as well as in dirt where protection is not usually needed. Many government agencies are requiring protective street pads. These **BLS** products could solve your customer's needs.



Mini-Excavator with **BRIDGESTONE** Continuous Rubber Tracks

**BLS** supplies **BRIDGESTONE** continuous rubber tracks for mini-excavators,

skid steer loaders, compact dozers, and other small construction machines. **BRIDGESTONE** continuous rubber tracks are installed as original equipment on many of these machines, and **BLS** believes them to be the best replacement tracks available. Continuous rubber track orders for the popular machines can be shipped within 24 hours and sometimes the same day.

**BLS** polyurethane **TUFPADS**® backhoe stabilizer pads are available for John Deere, Case, Ford, Kobelco, Fermecc, Caterpillar and other backhoe style machines. The polyurethane **TUFPADS**® stabilizer pads last 2 to 4 times longer than the conventional rubber pads.

**BLS** fiberglass **Endura-Mat** outrigger mats are used to protect the surfaces under the outrigger extensions on mobile cranes, backhoes, and utility vehicles. The **Endura-Mat** can also be used to level machines.



Endura- Mat

## BLS WEBSITE NOW WITH INFORMATION IN EIGHT DIFFERENT LANGUAGES

Do you need more information on **TUFPADS**® track pads, or any of the other products that **BLS Enterprises** has available? Would you like to know how to measure your track pads or for which machines **BLS** supplies track pads? Visit our web site at [www.tufpads.com](http://www.tufpads.com), and instantly get information on different products, updates, new releases, and answers to our most frequently-asked questions. You can also fill out a customer track pad worksheet and e-mail it to **BLS** for a fast quote on the correct **BLS TUFPADS**® track pads to purchase for your machine.



**BLS Enterprises, Inc.** offers information in eight different languages including Chinese, English, French, German, Italian, Japanese, Portuguese and Spanish. Stop back often, as we will be updating our web site regularly.

## NEW BLS COLORED POSTER

**BLS Enterprises, Inc.** is proud to introduce its new two-sided, colored product information poster. The attractive colored front side illustrates various applications using polyurethane **TUFPADS**® track pads. In addition, there are photos of other **BLS** supplied products, such as **BRIDGESTONE** continuous rubber tracks, **Artliner-BLS** "Clip-on" and "Bolt-on" pads, **Endura-Mat** fiberglass outrigger mats, and other quality **BLS** products. The poster is designed to hang in the offices, shops, and show rooms of **BLS** customers.



On the back there is more information on **BLS** products, including frequently asked questions about **TUFPADS**® track pads, and instructions on measuring a continuous rubber track for a **BRIDGESTONE** replacement track. A customer track pad worksheet with instructions on how to fill it out is also provided to help determine which **BLS** track pad the customer needs.

If you have not received this poster and would like to receive one, please call **800-307-0299**, or indicate this on the perforated card and send it to **BLS**.

## BLS HELPS THE COMMUNITY



**BLS** has been a corporate sponsor for the **American Cancer Society** Elk Grove Village Relay For Life for the past two years. The three teams sponsored by **BLS** last year raised over \$7,600 toward the \$55,000 total for this event. In 1999 more than \$6.4 million (a 31% increase from 1998) was raised in Illinois through the Relay For Life, which was part of the over \$100 million raised nationally through this event.

The local American Cancer Society recently recognized **BLS Enterprises, Inc.** as a member of the prestigious Circle of Hope for **BLS**' significant investment in the programs of the American Cancer Society. Gifts such as this enable the **American Cancer Society** to continue their research, education and service programs.

**BLS** helps support local youth as a Gold Sponsor of the Elk Grove Village Park District Amateur Soccer Club Skill Time summer soccer camp.





BLS ENTERPRISES, INC.  
1080 Nerge Road, Suite 204  
Elk Grove Village, IL 60007-3224

BULK RATE  
U.S. POSTAGE  
**PAID**  
Elk Grove Village, IL  
Permit NO. 130

Toll Free: 888-TUFPADS Fax: 847-301-0651  
Local and International: 847-301-0299  
Web Site: [www.TUFPADS.com](http://www.TUFPADS.com)  
E-Mail: [bls@tufpads.com](mailto:bls@tufpads.com)



Provide Traction • Protect Pavement  
Durable • Economical • Recyclable

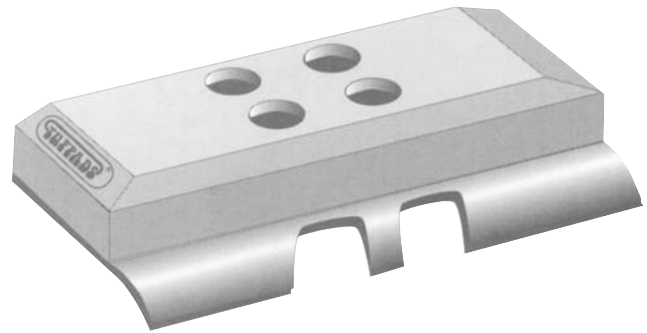
First to Develop Polyurethane Track Pads  
First in Service and Satisfaction with Worldwide Sales  
Largest Available Inventory with Same Day Shipping  
First to Recycle Used Track Pads

Also Available:

**HQRPADS** Rubber Track Pads

**BRIDGESTONE** Continuous Rubber Tracks

**ARTLINER-BLS** Rubber Clip-on/Bolt-on Pads



Visit Our Web Site for More Information in Various Languages.



CAT PM565 with **TUFPADS**® Track Pads

### **TUFPADS**® THE #1 TRACK PAD FOR MILLING MACHINES

**BLS** Enterprises' polyurethane **TUFPADS**® track pads are being purchased by a number of milling machine manufacturing companies including Roadtec, Caterpillar, Wirtgen, CMI, and others, which proves that **TUFPADS**® track pads have been put to the test. They are being used successfully on milling machines and other steel track-driven construction machines worldwide. Look for the **TUFPADS**® track pads logo on your polyurethane track shoes to be sure you have the quality track pads you expect.

The polyurethane **TUFPADS**® track pads are perfectly suited to asphalt milling applications because they provide a long-lasting "smooth ride", enabling the milling machines to mill up asphalt at a uniform and predictable rate. **TUFPADS**® track pads wear down evenly, as if a large block of sandpaper had sanded them down, achieving a ride that assures uniform cutting season after season, instead of the rough ride realized with rubber track pads that wear unevenly and have pieces cutting or chunking off.

Besides the smooth ride, **TUFPADS**® track pads give the milling machine more traction than bare steel shoes, allowing the milling machine to travel at a faster, more efficient rate. Forcing the sharp cutting teeth into the hard asphalt requires high horsepower and a lot of traction. Milling machines have powerful engines that can turn the drive track so fast, that without excellent traction, the track can start to spin, reducing efficiency and compromising the uniformity of the milling operation. Jim Davidsmeyer of Asphalt Stone Company in Jacksonville, Illinois told **BLS**, "We put a set of these (**TUFPADS**® track pads) on the front of our machine and it eliminated the slippage. We are very satisfied with the product."

Contractors report getting up to 6,000 hours use before it is necessary to recycle their old pads into new ones. In a note to **BLS**, Ed Kearney, Chief Engineer for Gorman Brothers, Albany, New York, stated, "After we recycled 36 miles of pavement and milled about 100,000 square yards, we're completely satisfied (with **TUFPADS**®). Our original equipment pads were totally gone after 70 miles of recycling and yours look new."

**BLS** offers a program in which credit is given for the old used metal cores, when new **TUFPADS**® track pads are purchased. Brian Hansen, Vice-President-Operations for Dustrol, Inc., Towanda, Kansas, has been very satisfied with **TUFPADS**® track pads, which are being used on all of Dustrol's large fleet of milling machines. "We have used **TUFPADS**® for several years. **TUFPADS**® wear better than the old rubber pads with as good of traction in our type of application. Recycling **BLS** Enterprises **TUFPADS**® is another plus. The recycled pads save us money and that's the bottom line."



ROADTEC RX50 with **TUFPADS**® Track Pads