

# MISSION STATEMENT

**BLS Enterprises'** mission is to provide quality, cost effective, durable wear parts for the construction industry, with the finest customer service available. **BLS** strives to accomplish this through its sale of polyurethane **TUFPADS**<sup>®</sup> track pads and its friendly and knowledgeable staff. These polyurethane track pads provide the same quality protection and traction as traditional rubber pads, with a greatly increased operational lifetime, lasting two to four times longer than rubber pads. Polyurethane **TUFPADS**<sup>®</sup> track pads have saved **BLS's** many customers the time and money spent on constantly replacing costly rubber track pads that chunk and shred off the steel plate. **BLS Enterprises** has continued to expand its quality product line at competitive prices to keep up with the requirements of its customers' needs.



The **#1** Polyurethane Street Pad Worldwide!

## NEW TUFPADS<sup>®</sup> BLUES<sup>™</sup> OUTPERFORM EVEN PREMIUM POLYURETHANE PADS

Contractors confirm longer life with **TUFPADS BLUES**. "They've performed very well for us," said Ryan Essex, vice president and general manager, U.S. operations, Miller Group, in Georgia. Miller Group acquired the pads in late winter 2005 and put them on a Wirtgen W2200 cold mill, the largest and heaviest in the line.

"They've given 15 to 20% improvement over the life of the conventional polyurethane pads," Essex said. "There's no question of their value, all things being equal. They certainly last longer. And since the interval to change is greater, your labor to change per set is lower as well. That can mean a pretty good savings there."

Miller uses its machines on Interstate-type work, or airport work, so it was putting the **TUFPADS BLUES** to the test. "We mill year-round without a winter break to change pads," Essex said. "We change them on-the-go in the middle of the season. In fact, those pads were changed out in midsummer, so they lasted a year and a half."

## NINE YEARS ON ONE SET OF TUFPADS

"My company, Bochart Excavating, of Kent, Ohio, owns five excavators...two are equipped with polyurethane **TUFPADS** track pads....Our John Deere dealer recommended that we try the polyurethane **TUFPADS** track pads...The pads worked out great...the **TUFPADS** track pads helped us to leave the streets in the same condition as we found them. Another big advantage is that, when we go into the mud, the traction with the **TUFPADS** is just as good as with the steel tracks that came on the machines...Nine years later I am happy to report that our John Deere machine has over 5500 hours on the **TUFPADS** track pads, and only now are they ready for replacement. We are going to replace the machine this year, and the first accessory I am going to buy for the new machine is more **TUFPADS** track pads. These pads are truly an excellent product."

**Rick Bochart**  
Bochart Excavating, Kent, Ohio

## BOLT-ON WEAR EQUAL TO BONDED

"Having used the **Poly Bolt-On** pads on older machines gave me the confidence to go ahead and order them for the new Roadtec RX-900s. I believe that the **Poly Bolt-On** pads are equal in all respects to the bonded polyurethane **TUFPADS** track pads that we have been using for years. They wear at exactly the same rate as the **TUFPADS** and the ease of installation has really made me a believer.

I first started to do business with **BLS Enterprises** about 12 years ago, and from the beginning, I have found them to be a company that is genuinely interested in providing exceptional customer service. They gave us credit with minimal documentation and red tape, and they have given us first class service and excellent quality ever since. I have been so pleased with **BLS**, that I never really felt the need to pursue any other options."

**Jim Tinkey**  
L & L Construction, Holt, Michigan



BLS Poly Bolt-On<sup>®</sup> TUFPADS<sup>®</sup> BLUES<sup>™</sup> Track Pads



TUFPADS<sup>®</sup> Track Pads on a Case CX135 Excavator



BLS Poly Bolt-On<sup>®</sup> Track Pads on a Roadtec RX-900 milling machine



**BLS Enterprises, Inc.** also provides other high quality construction products including • **BLS Stabilizer Pads** in polyurethane and rubber • **BRIDGESTONE** continuous rubber tracks • **Centri**<sup>®</sup> Air Precleaners • Complete Track Assemblies • **BLS** can also customize products to fit your individual needs.

To request more information on any **BLS** product, please contact our office, where a **BLS** sales associate will be glad to assist you.



1115 Hilltop Drive, Unit B1, Itasca, IL 60143

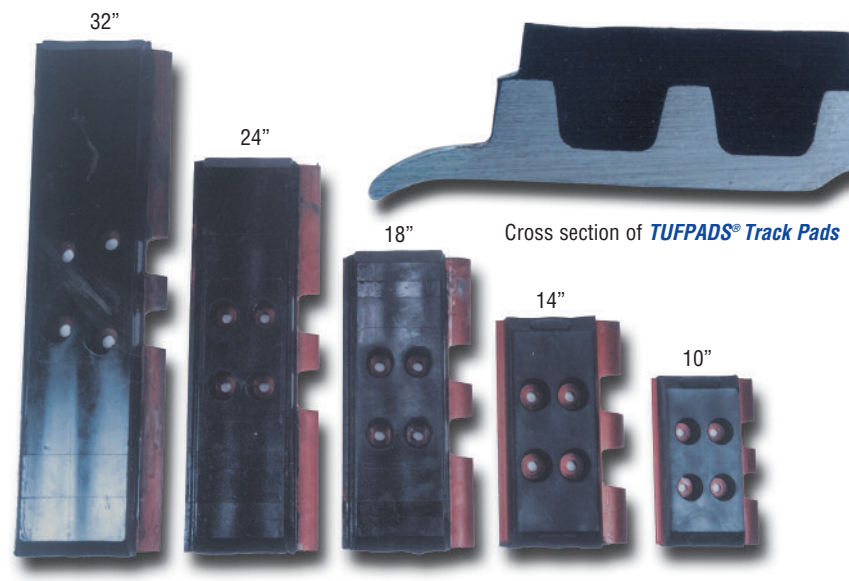
(888) TUFPADS • (800) 307-0299 • International and Local: +1-630-775-0900  
Fax: +1-630-775-0903 • E-mail: bls@tufpads.com • www.TUFPADS.com  
Office Hours: 7:30am - 5:00pm, M - F, Central Time



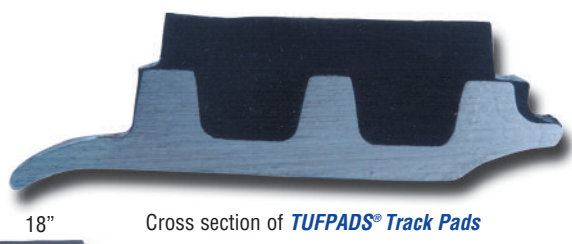
**TUFPADS**<sup>®</sup> is a registered trademark of **BLS Enterprises, Inc.**

**BLS Poly Bolt-On**<sup>®</sup> is a registered trademark of **BLS Enterprises, Inc.** • **BLS Enterprises**<sup>®</sup> is a registered service mark of **BLS Enterprises, Inc.**

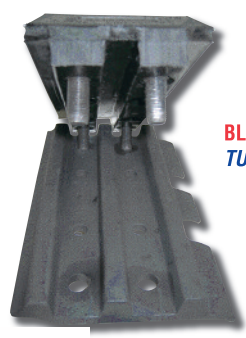
1115 Hilltop Drive, Unit B1, Itasca, IL 60143  
(888) TUFPADS • (800) 307-0299 • International and Local: +1-630-775-0900  
Fax: +1-630-775-0903 • E-mail: bls@tufpads.com • www.TUFPADS.com



**Bonded-To-Triple-Grouser TUFPADS® Track Pads**  
One-piece polyurethane permanently bonded to a steel triple grouser



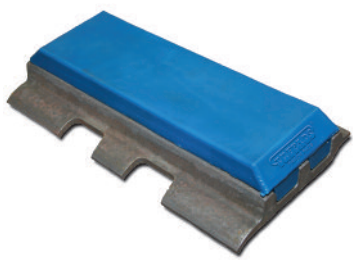
Cross section of **TUFPADS® Track Pads**



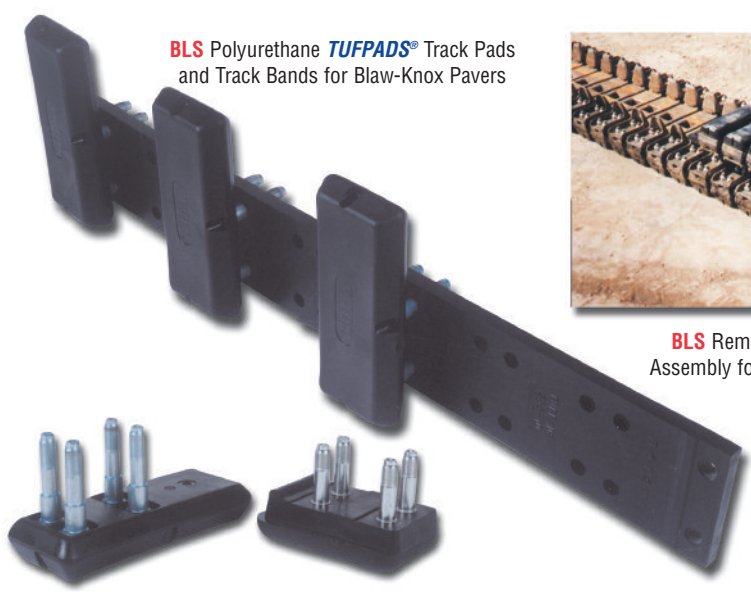
**BLS Poly Bolt-On® TUFPADS® Track Pad**



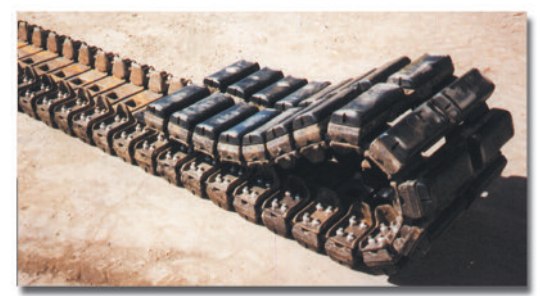
**BLS Poly Bolt-On® TUFPADS® BLUES™ Track Pad**



**BLS Poly Bolt-On® TUFPADS® BLUES™ Track Pad attached to triple grouser**



**BLS Polyurethane TUFPADS® Track Pads and Track Bands for Blaw-Knox Pavers**



**BLS Remanufactured Complete Track Assembly for the Blaw-Knox PF 500 Paver**



**Provide Traction • Protect Pavement • Durable • Economical • Recyclable**

**Track Pads Available in:**

- Extreme Blue Polyurethane
- Premium Polyurethane
- Medium Grade Polyurethane
- High Quality Rubber

**BLS is #1 in These Important Areas:**

- First in customer service and satisfaction
- First in quality and durability
- First to bring polyurethane track pads to the industry
- First with polyurethane bolted to steel triple grouser track pads
- First to bring extreme blue polyurethane track pads to the industry
- Largest variety of styles and sizes to fit your machine
- Largest available inventory for popular machines
- First to recycle metal cores of triple grouser track pads

**Track Pads Available:**

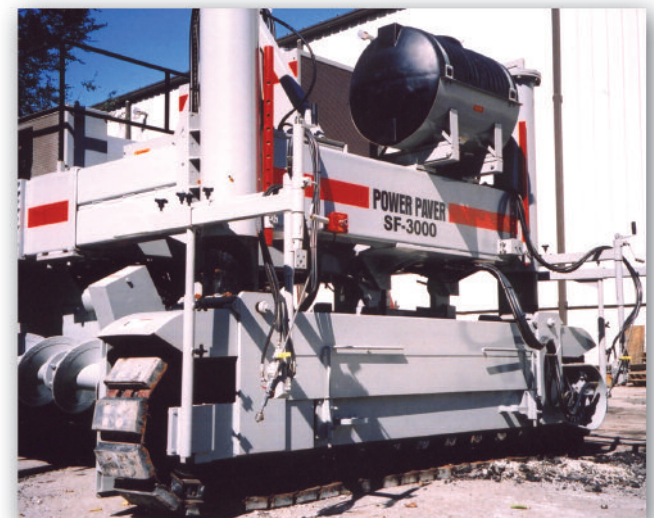
- Premium Polyurethane **TUFPADS®** Track Pads
- Polyurethane **BLS Poly Bolt-On® TUFPADS®** Track Pads
- Extreme Polyurethane **TUFPADS® BLUES™** Track Pads
- Medium Grade Polyurethane **BLS Poly-MG®** Track Pads
- High Quality Rubber **HORPADS™** Track Pads
- Rubber **Artliner-BLS** Clip-On and Bolt-On Track Pads
- **Nyrim®** Track Pads for Low Ground Pressure
- Polyurethane **TUFPADS®** Track Pads and Track Bands for **Blaw-Knox** Pavers



**TUFPADS® Track Pads** on a Caterpillar 312B Excavator



**BLS Poly Bolt-On® Track Pads** on a Roadtec RX-500 milling machine



**TUFPADS® Track Pads** on Power Paver SF-3000 Concrete Paver



**Track Pads For:**

- ABG • Barber-Greene • Bitelli • Blaw-Knox • Bomag • Case • Caterpillar • Cedarapids • CMI • Daewoo • Demag • Dresser • Bomag/Gilcrest • Gomaco • Gradall • Guntert-Zimmerman • Hitachi • Ingersoll-Rand • John Deere • Kobelco • Komatsu • Kubota • Leeboy • Link-Belt • Mauldin • Miller Formless • Power Curbers • Rex • Roadtec • Samsung • Tesmec • Trencor • Vermeer • Vogele • Volvo • Wirtgen and others

**If you don't see it, ASK!!**



**Bolt-On Track Pads**  
Polyurethane bolt-on track pads bolt on to the existing flat steel plate.

**BLS ENTERPRISES, INC. IS #1 IN TRACK PADS BECAUSE:**

**BLS is first in customer service and satisfaction:**

BLS's cheerful, knowledgeable sales staff is always ready and willing to answer all your questions about any BLS product. BLS always makes that special effort to ship your purchase in the shortest possible time. A sales associate can help you to order custom made products for your individual needs. Testimonials from many of BLS's satisfied customers are available upon request.

**BLS is first in quality and durability**

BLS gives you a full inch (25mm)\* and more of polyurethane bonded to the steel triple grouser, because we believe that a thicker pad lasts longer. BLS supplies manufacturers of heavy construction machines with TUFPADS track pads, and many pavers and milling machines come with TUFPADS as standard or optional equipment. \*Unless clearance requires less than one inch.

**BLS was the first to bring polyurethane pads to the industry:**

In 1986, BLS became the first company in the United States to promote the use of polyurethane track pads (TUFPADS Track Pads) for use in the heavy construction and road building industry on asphalt milling machines and asphalt and concrete pavers.

**BLS was the first to bring to the industry polyurethane BLS Poly Bolt-On® track pads:**

These track pads bolt directly to the steel triple grouser and simplify the installation and removal of track pads from the machine, while allowing reuse of the steel grouser shoe.

**BLS has the largest variety of styles, sizes and inventory:**

At present BLS has produced polyurethane TUFPADS track pads for over 400 different machines. Please see the included insert for a partial listing of the machines for which TUFPADS track pads are available. BLS stocks thousands of TUFPADS track pads in the most popular sizes in its Chicago, Wisconsin, and Kansas warehouses. Track pads from this inventory are usually available for immediate shipment.

**BLS continues to innovate:**

BLS introduced the extreme polyurethane TUFPADS BLUES™ track pads. Over a two-year test period on asphalt milling machines, these new polyurethane pads were proven to last 15 to 30% longer than the long-lasting standard black polyurethane pad.

**BLS is first in core return:**

Since 1986, BLS has allowed its customers to return used triple grouser TUFPADS track pads for core credit to reduce the customer's net cost. BLS allows customers to turn cores into purchasing power, instead of having to dispose of the old cores in a back lot or a landfill.